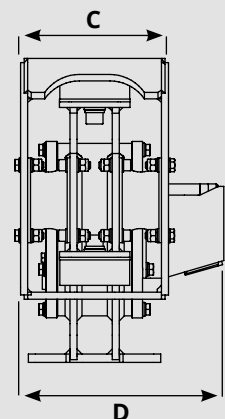
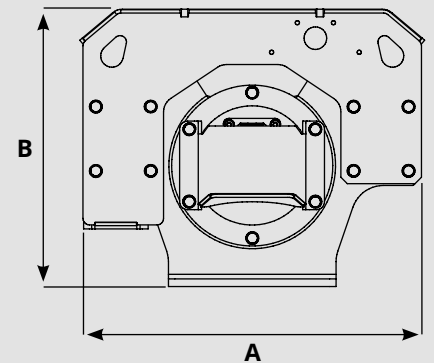


# w1 15.0 Plury

Tons 1.5 - 4.5



Model	PLURY W1 15.0	PLURY W1 15.0	PLURY W1 15.0
A (mm)	525	525	525
B (mm)	430	430	430
C (mm)	210	210	210
D (mm)	290	290	290
Peso / Weight (Kg)	105	105	105
Motore / Engine (CC)	11	14	17
Portata Olio Hydraulic Fluid Flow Rate (L/Min)	23	31	37
Pressione / Pressure (BAR)	150/220	150/220	150/220
Frequenza Vibrazione Vibration Rate (RPM)	2.130	2.153	2.173
Forza centrifuga Centrifugal Force (Kn)	15	15	15
Hertz	36	36	36



# MACHINE ATTACHMENTS

Tons 1.0 - 4.5

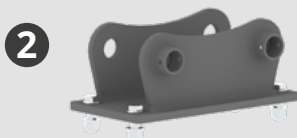


## ATTACCHI MACCHINE / MACHINE ATTACHMENTS

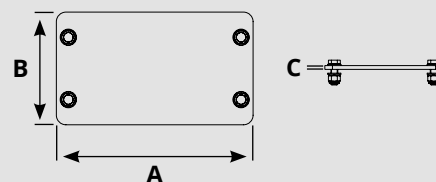
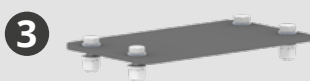
ADATTATORE PER ATTACCO RAPIDO  
ADAPTER FOR QUICK COUPLING



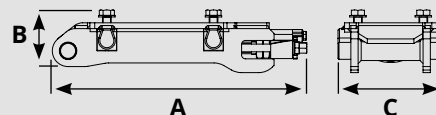
ATTACCO MACCHINA FISSO  
FIXED COUPLING TO THE MACHINE



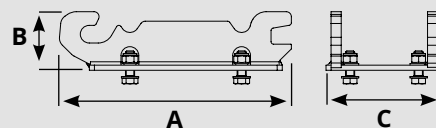
PIASTRA ATTACCO MACCHINA  
BOLTED PLATE TO THE MACHINE COUPLING



TOK ATTACCO RAPIDO 1/4.5 TON  
TOK QUICK COUPLER 1/4.5 TON



TOK ADATTATORE 1/4.5 TON  
TOK ADAPTER 1/4.5 TON



	Model	A mm	B mm	C mm	Kg.	€
1	ADAPTER FOR QUICK COUPLING	/	/	/	/	
2	FIXED COUP. TO THE MACHINE	/	/	/	/	
3	BOLTED PLATE TO MACHINE COUPLING	410	235	10	8.5	
4	TOK QUICK COUPLER 1/4.5 ton	525	103	220	29	
5	TOK ADAPTER 1/4.5 ton	460	120	230	19,5	