



RANGE

VSE

SCREENING BUCKET

ADJUSTABLE OUTPUT SIZE

VSE 10

VSE 20

VSE 30

VSE 40

- Quick adjustment of output size
- Effective with wet material
- High productivity
- Simple operation
- Easy loading
- Easily replaceable screening tools

SCREENING BUCKET

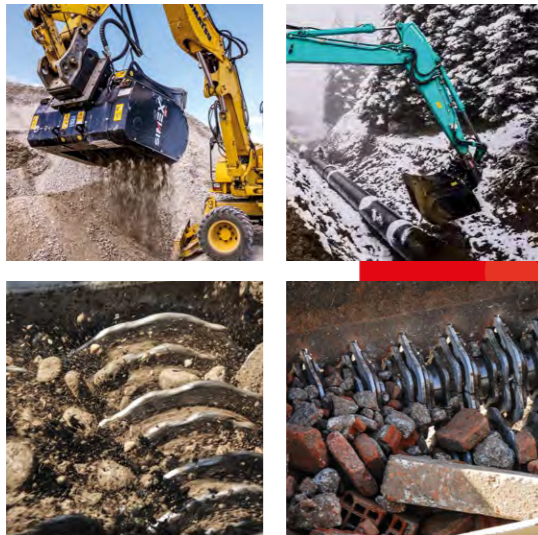
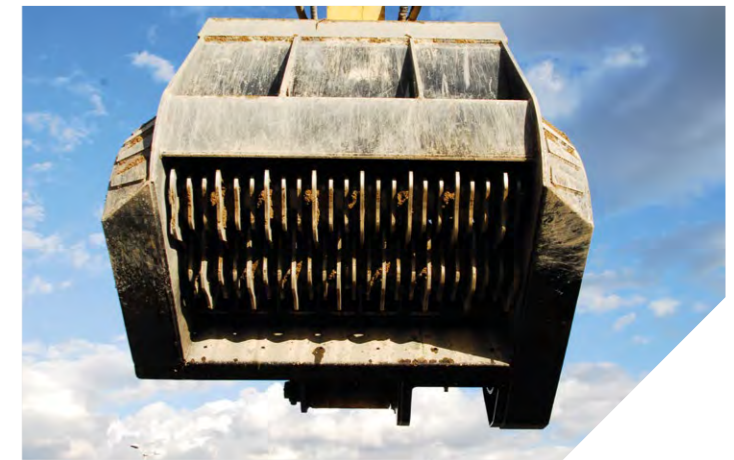
ADJUSTABLE OUTPUT SIZE

VSE 10
VSE 20
VSE 30
VSE 40



Designed for **separating different-sized materials on the work site**, Simex VSE screening buckets are unique for their **easy loading, very simple operation and high productivity**.

The exclusive Simex patent allows **rapid adjustment of output size** of the screened material in only seconds via a control in the operator cabin.



ADVANTAGES

- Quick adjustment of output size
- Effective with wet material
- High productivity
- Simple operation
- Easy loading
- Easily replaceable screening tools

TECHNICAL DATA		VSE 10	VSE 20	VSE 30	VSE 40
Recommended excavator weight (1) (2)	ton lbs	8 - 13 17500 - 29000	12 - 18 26000 - 40000	16 - 30 35000 - 66000	30 - 45 66000 - 99000
Mouth width	mm	860	1100	1260	1340
	inch	34	43	50	53
Total width	mm	1220	1485	1650	1835
	inch	48	58	65	72
Bucket capacity (SAE)	m ³	0,40	0,70	1,00	1,80
	yd ³	0,52	0,92	1,30	2,35
Screening area	m ²	0,56	0,80	1,00	1,36
	yd ²	0,67	0,96	1,20	1,63
Shaft travel	mm	40	40	40	40
	inch	1,6	1,6	1,6	1,6
Number screening shafts	n°	2	2	2	3
Operating weight (3)	kg	965	1400	1845	2725
	lbs	2125	3080	4060	6000
Required oil flow	l/min	90 - 125	100 - 150	165 - 220	180 - 280
	gpm	24 - 33	27 - 40	44 - 58	48 - 74
Max. required oil pressure	BAR	250	250	250	250
	psi	3600	3600	3600	3600

(1) The maximum operating load permitted for the excavator, when added to the weight of the standard bucket, must match or exceed the weight of the bucket at full load.
(2) User is responsible for ensuring that the equipment meets the excavator's specifications and weight requirements.
(3) Without mounting bracket.

Simex does not accept responsibility or liability for the information provided. Technical modifications may vary without prior notice.



- Utilities
- Quarries and mines
- Demolition
- Port and underwater works
- Construction and building
- Infrastructure
- Tunneling
- Agriculture and forestry
- Recycling
- Roadworks
- Trenching
- Mini-excavator
- Excavator
- Skid steer loader
- Front loader
- Backhoe

VSE 10
VSE 20
VSE 30
VSE 40

Utilities

Quarries and mines

Demolition

Port and underwater works

Construction and building

Infrastructure

Tunneling

Agriculture and forestry

Recycling

Roadworks

Trenching

Mini-excavator

Excavator

Skid steer loader

Front loader

Backhoe

HIGH INCREASE IN PRODUCTIVITY

Shafts are composed of elements with varying-sized disks that produce an intense **whirling of the material to be screened.**

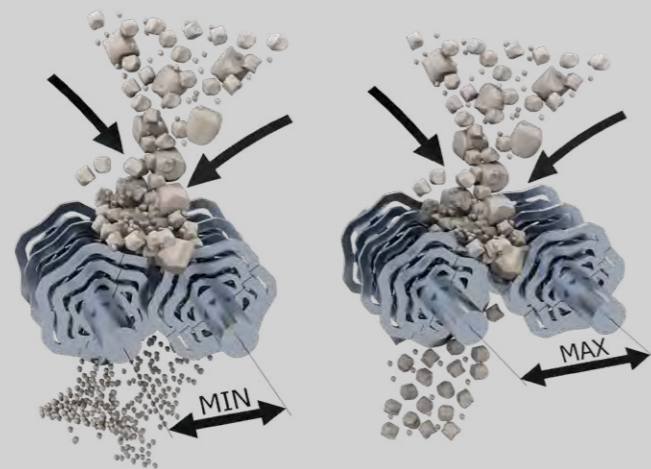
SIMEX
• patent •

SIMEX PATENT

Quick adjustment of output size.

Thanks to a simple control from the operator **cabin**, the Simex-patented mechanism allows shafts to be distanced or closed via a hydraulic system to **vary output size of screened material in only seconds.** Alternatively, the adjustment can be made by a remote control (*optional*).

MINIMUM/MAXIMUM



HIGH PRODUCTIVITY

Even when working with wet soil

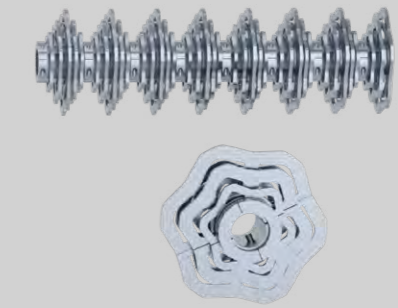
EASY LOADING

Wide mouth shaped as standard bucket

SCREENING TOOLS ARE EASILY REPLACEABLE

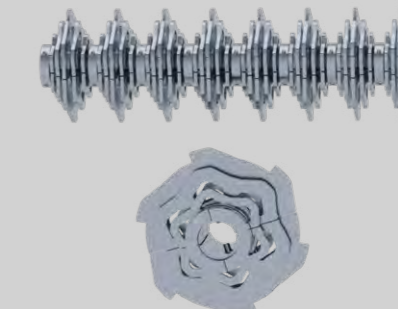
Screening elements have different profiles to work with various materials. **Tool replacement is rapid and requires no disassembly of shafts.**

STANDARD TOOLS



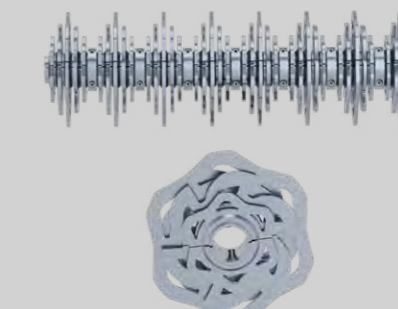
Tool for screening mixed material

BREAKING TOOLS



Tool for screening and breaking up light materials

MIXED TOOLS



Tool with blade for cutting non-stony objects contained in the material

